

\_\_\_\_\_

# Lire

(lecture syllabique)

\_\_\_ / \_\_\_ / \_\_\_

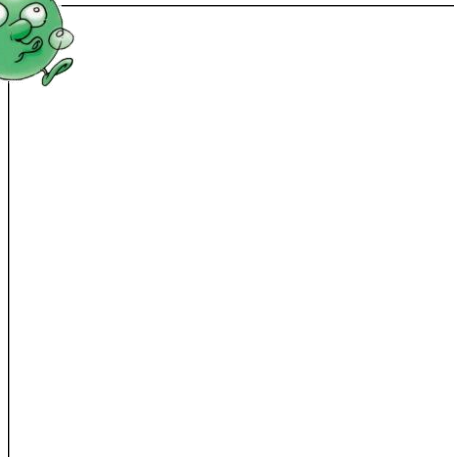
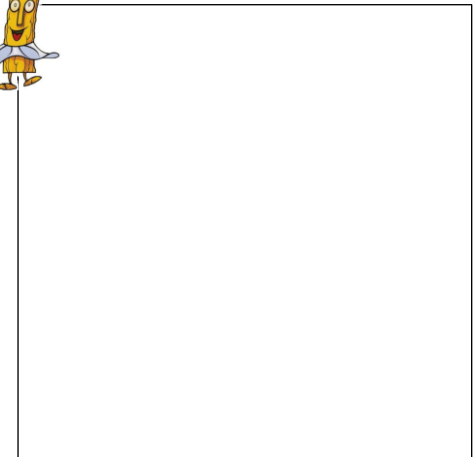
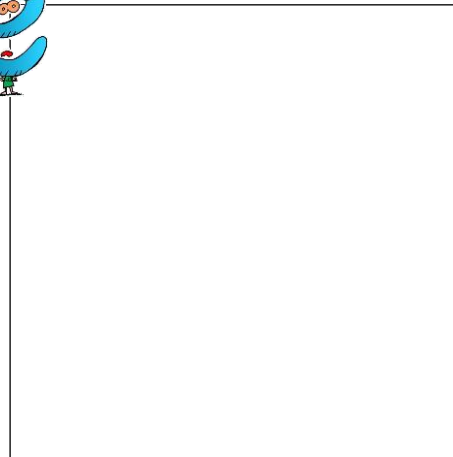
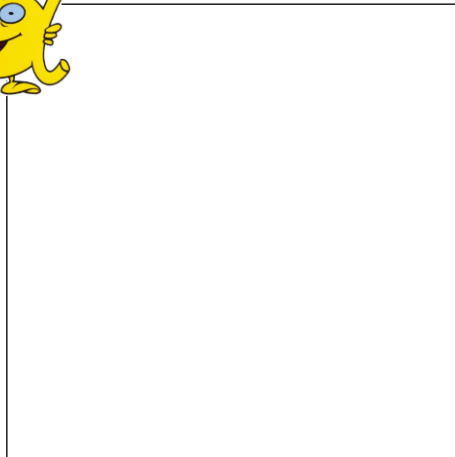


lundi mardi mercredi jeudi vendredi samedi dimanche

Objectif: Je traite les unités lexicales en recourant aux correspondances graphophonologiques. 😊 😐 😞

## J'apprends à reconnaître les voyelles

1 **DECOUPE** les lettres et **COLLE**-les dans la bonne maison.



2 **ENTOURE** les i en jaune, les o en vert, les e en bleu, les a en orange et les u en rose.

e o u i a o i a a i i é a i u o i o  
i a a o i a e a i u u u i u a i o a i u  
O A J J A A O J J U U A J A U O J J  
A I O A I A A U E I I O O A E I A I E O I E

a	e	i	e	u	o	e	i	u	a	i	U	o	a	u	a
o	i	o	ℰ	A	l	ℱ	ℳ	U	ℳ	o	ℱ	ℰ	E		

a	e	i	e	u	o	e	i	u	a	i	U	o	a	u	a
o	i	o	ℰ	A	l	ℱ	ℳ	U	ℳ	o	ℱ	ℰ	E		

a	e	i	e	u	o	e	i	u	a	i	U	o	a	u	a
o	i	o	ℰ	A	l	ℱ	ℳ	U	ℳ	o	ℱ	ℰ	E		

a	e	i	e	u	o	e	i	u	a	i	U	o	a	u	a
o	i	o	ℰ	A	l	ℱ	ℳ	U	ℳ	o	ℱ	ℰ	E		

a	e	i	e	u	o	e	i	u	a	i	U	o	a	u	a
o	i	o	ℰ	A	l	ℱ	ℳ	U	ℳ	o	ℱ	ℰ	E		

